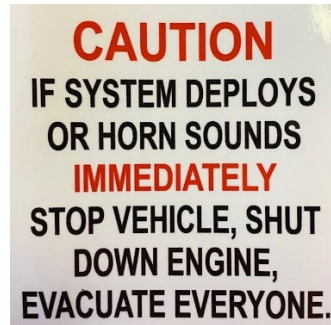
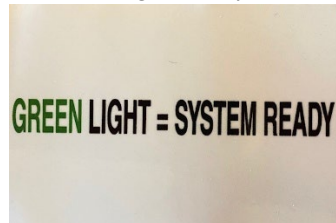


Sticker Placement: Clean all sticker locations with provided alcohol wipes & allow to dry completely prior to installation. Packet contains 15 stickers.

- *Place the Automatic Fire Suppression System Installed, and Caution stickers in the cab on the driver side dash or window.*



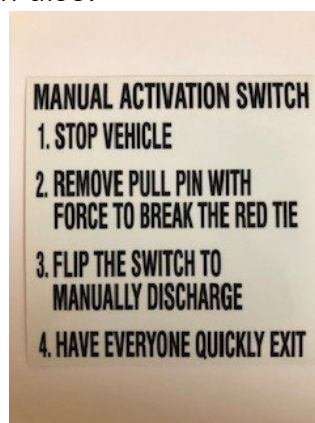
- *Place Green Light = System Ready sticker above the green LED.*



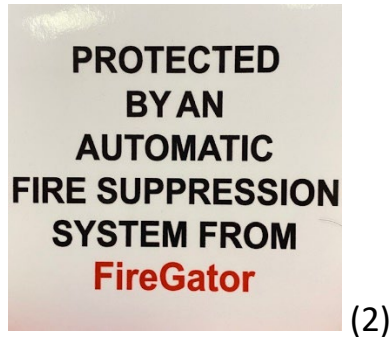
- *Place the (red) Manual Fire Suppression System Switch and the (red) Remove Safety Pin stickers on the dash by the switch.*



- *Place the Manual Activation Switch sticker near the manual activation switch also.*



- *Place the Protected by An Automatic Fire Suppression System stickers and the EPA Approved stickers on each side of the hood close to the cab. This is to inform Emergency Responders.*



- *Place the For Parts and Service sticker under the hood on the driver's side.*



- *Place the Notice stickers and the Generators are Hot stickers next to each generator.*

